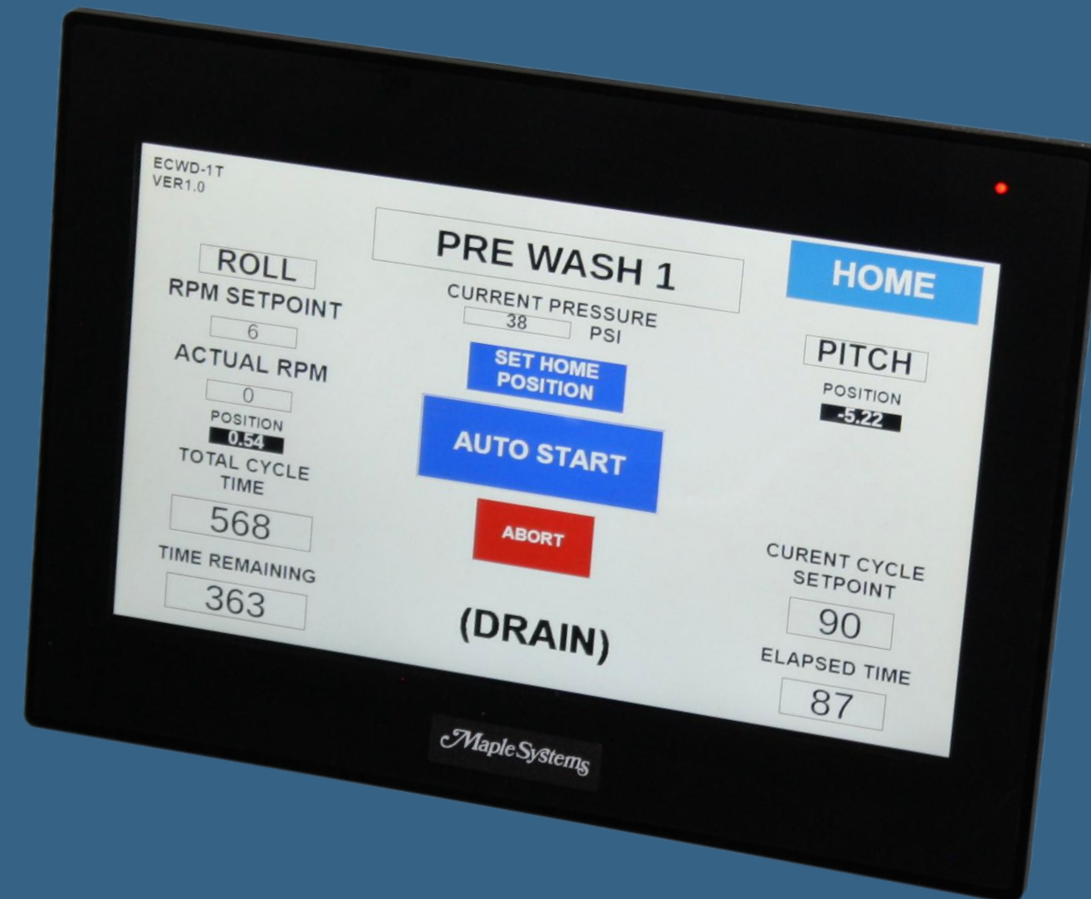


ECWD-1T

Cylinder Wash Dryer 1 Ton Container

The ECWD-1T Automates the washing and drying of 1 ton containers. Processes can be done automatically or manually. The Ton containers are mounted onto the ECWD-1T and can be programmed to roll 180° in either direction allowing for full coverage of the inside of the tank. Steam capable and 5° tilt angle the cylinder to be washed and dried. Filtered air is injected into the inverted cylinder, Hot water (180°) and/or steam is introduced into the cylinder To rapidly heat the cylinder walls, followed by a burst of clean air to produce a 'fresh dried' cylinder. Status light flashes to identify processes and when cylinder is able to be disconnected.



Electrical: 230/480v 3phase and 110v required
Air: 100PSI @ 22 CFM,
Water: 10 GPM @ 60 PSI, Hot Water: 10 GPM @ 60 PSI,
Maximum Allowable Steam: 284°F/140°C @ 90psi

VIDEO

Programmed with following cycles:

- Roll Cycle
- Pre-Wash
- Acid Wash
- Final Wash

Cylinder Connections:
Inject – opposite side
front connections
Drain 1 / Drain 2 or
Purge